



ENTROPY
TECHNOLOGY



COMMS_{DUO}

EMERGENCY BASE STATION

Comms Duo is a fully functional GSM and LTE network capable of providing a reliable and efficient way to communicate under harsh weather conditions. It enables a whole new way of connecting and coordinating in emergency situations especially in areas where mobile phone coverage is non-existent.

Comms HQ

Designed to support multiple equipment nodes for management and communication between emergency rescue units efficient and reliable.

*Requires Comms HQ Software



Rapidly deploy in emergency and calamity situation



Easily allow any mobile phone to connect to emergency network



Broadcast emergency news, announcements and safety messages via SMS



SMS Access Code routed to Emergency Response Team for quick relay of information



Integrate to Social Media and update status via SMS



Deploy an onsite Hotline service for quick coordination



Easily power up with available power options



Informative dashboards to track Voice calls and SMS in the network and through the Hotline



Wireless access to configure and easily manage eReach Network

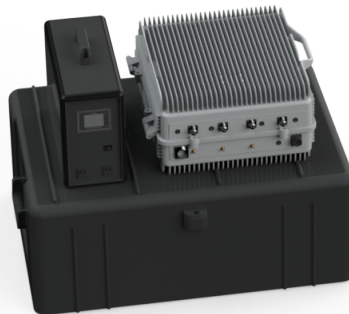


Connect to external VoIP networks for remote centralized coordination

SPECIFICATIONS

HARDWARE SPECIFICATIONS		
	GSM	LTE
Operating Band	E-GSM 900	Band 3
Operating Frequency (MHz)	880 - 960	1710 - 1880
TRx Configuration	Dual-ARFCN	2 x 2 MIMO
Output Power	2 x 10W	2 x 5 W
Bandwidth	200 KHz	Up to 15 MHz
Peak Throughput (Mbps)	N/A	100 Mbps (DL), 25 Mbps (UL)
Capacity	Maximum concurrent calls: 15/30 (Full/Half Rate) Maximum simultaneous SMS: 124 (15SDCCH/8 + 1SDCCH/4)	64 active users; 200 RRC-connected
Sensitivity (dBm)	-104	-101
Data Interface	1 Gbps Ethernet	
Timing and Synchronization	GPS Disciplined Oscillator	
DC Input (V)	± 48	± 48
Power Consumption	280 W	
Operating Temperature (°C)	-20 to +50	
Dimensions	513mm x 462mm x 233mm	
Weight	25kg	
Weatherproofing	IP67 Water/Dust Resistance	
LED indicators	3 x RGB LEDs: Supply status, Transmit Level/Activity	
SOFTWARE SPECIFICATIONS		
Mobility	Inter-BSC; Intra-BSC	S1 Handover
Voice Services	Telephony	VoLTE CSFB
QoS Features	TDMA	Support for LTE QCLs
Ciphering	A8 / A5	SNOW/AES
Secure Backhaul Connectivity	SSL VPN or IPsec	
Regulatory Compliance	EN 301 502I EC 60950	EN 301 908-14 IEC 60950

ACCESSORIES		
RF Antenna	Type	2 x Omnidirectional
	Gain (dBi)	6
	Connector	1 x N-Type (F)
	Cables	2 x N-Type (M) to N-Type (M) 1 meter 2 x N-Type (M) to N-Type (M) 10 meters
	Dimensions (cm)	Ø2.2 x 62
GPS Antenna	Type	Active (3V-5V)
	Connector	SMA (M)
	Cable length	5 meters
	Mounting	Magnetic mount
	Weatherproofing	IP67 Water/Dust Resistance
WiFi Antenna	Type	2 x Whip
	Gain (dBi)	3.9
	Connector	RP-SMA (M)
Tripod	Folded Length (cm)	104
	Max Height (cm)	300
Battery	Electrical	Max load: 1500W Input: 36-65 VDC / 6 A (Max) Output: - 4 x USB Ports: 5VDC/3A - 2 x 5521 Ports: 12VDC/10A - 2 x 220VAC/1500W/50Hz or 110VAC/1500W/60Hz
		Cycle times: 800 times (capacity ≥ 80%) Operating temperature: -10 °C~50 °C Charging time with AC adapter: 5.5-7Hours
	Dimensions (mm)	408x164x273
Dry Case	Weight (kg)	14 kg
	Dimensions LxWxH (cm)	83.8 x 61.5 x 6.0 cm
	Weight (kg)	17



Telco Network Ready

Comms has the capability to work with external telco network components.

- Supports Abis (e.g. Abis/IP) interface towards an external BSC
- Supports A-over-IP (AoIP) towards an external MSC

*Requires integration